

DUSH OXI FRESH



SIZES

1 ltr

COLORS

Clear

AREA OF USE

Granite

PHYSICAL STATE

Liquid

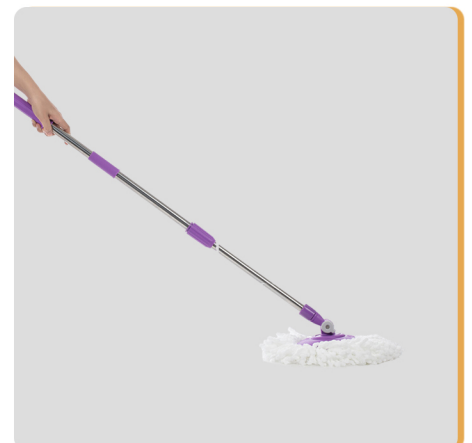
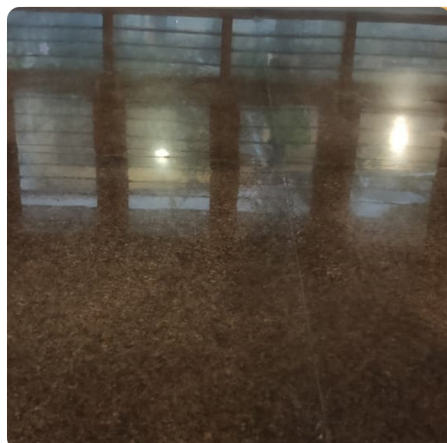
COLOUR

Clear

DESCRIPTION:

DUSH OXI FRESH is an effective cleaner specifically designed to remove calcareous layers and other mineral deposits. It excels in eliminating construction yard dirt and saline encrustations, making it ideal for post-construction clean-ups. By opening the material's penetrability, DUSH OXI FRESH enhances the effectiveness of subsequent protective sealers.

Product Application Photo:



INSTRUCTIONS TO USE:

1. Apply diluted or undiluted product on surface depending on the density of the accumulated dirt.
2. Let the product work for 15 – 20 minutes, scrub with a brush and rinse thoroughly with clean water till every trace of product is eliminated.
3. Apply an impregnator/protecting product, if needed.

FEATURES AND BENEFITS:

1. **Effective Mineral Removal:** Removes calcareous layers and mineral deposits efficiently, restoring the stone's natural appearance.
2. **Construction Dirt Elimination:** Excels in cleaning construction yard dirt and saline encrustations, ensuring a spotless surface post-construction.
3. **Enhanced Sealer Penetration:** Opens the penetrability of the material, allowing protective sealers to penetrate more effectively and provide better protection.
4. **Versatile Cleaning:** Suitable for various types of stone surfaces, offering a comprehensive cleaning solution for diverse applications.
5. **Improved Surface Preparation:** Prepares surfaces for further treatment, ensuring that protective products adhere and perform optimally.

PRECAUTIONS AND NOTES:

1. Wear Hand Gloves.
2. Keep Out of Reach of Children.
3. Keep the application area enough ventilated.
4. Keep the product closed after usage and away from sunlight.
5. Always test the product before use.

HANDLING & SHELF-LIFE:

Keep the tins closed and stored in a cool and ventilated environment at a temperature of 28-35 °C, away from the source of heat. Best Before 12 months.

SAFETY RULES:

Keep the application area enough ventilated. Keep the tins closed after usage and away from sunlight. Please read carefully the safety data sheet before usage. Always test the product before use.

TECHNICAL INFORMATION :

PHYSICAL STATE		Liquid
COLOUR		Clear

CHARACTERISTICS OF PRODUCT	
PRODUCT ASPECT	Clear Liquid
ODOUR	Odourless

DUSH 

Toll Free No: 18008910133, E-MAIL: india@dushproducts.com

Website: dushproducts.com

Italy 

Via Roma, 2 Lancenigo di Villorba-31020, Treviso(TV) ITALY

DISCLAIMER:

Before using any Dush products, test on a small, inconspicuous area to ensure compatibility and understand the application process. Results may vary based on application methods, surface conditions, and climate factors such as temperature and humidity. While Dush aims to provide high-quality products, we cannot guarantee specific results due to these variables. By using Dush products, you acknowledge and accept that Dush shall not be held liable for any damage or unsatisfactory results arising from their use or misuse.