

DUSH SPARKLE PHASE



SIZES

1 ltr

COLORS

Clear

AREA OF USE

Marble & Granite

PHYSICAL STATE

Liquid

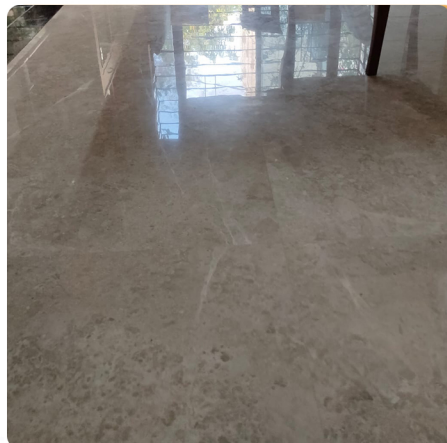
COLOUR

Lime Color

DESCRIPTION:

DUSH SPARKLE PHASE is highly recommended for daily maintenance of marble, does not contain any harsh cleaning substances, it makes a thin protective layer which helps brightens the surface and helps in subsequent maintenance along with protecting the sheen. Just mix 2-3 caps of solution in half bucket of water and use as a normal floor cleaner.

Product Application Photo:



INSTRUCTIONS TO USE:

1. Use 3-4 capful in half a bucket of water (4 litres).
2. Gently mop the surface. No need to rinse.
3. Kitchen Surfaces: Use undiluted. Apply on dirty area, leave for 10 minutes and rinse.
4. Safe on all surfaces: Marble Granite, Ceramic etc.

FEATURES AND BENEFITS:

Use 3-4 capful in half a bucket of water (4 litres).

Gently mop the surface. No need to rinse.

Kitchen Surfaces: Use undiluted. Apply on dirty area, leave for 10 minutes and rinse.

Safe on all surfaces: Marble Granite, Ceramic etc.

PRECAUTIONS AND NOTES:

1. Wear Hand Gloves.
2. Keep Out of Reach of Children.
3. Keep the application area enough ventilated.
4. Keep the product closed after usage and away from sunlight.
5. Always test the product before use.

HANDLING & SHELF-LIFE:

Keep the tins closed and stored in a cool and ventilated environment at a temperature of 28–35 °C, away from the source of heat. Best Before 12 months.

SAFETY RULES:

Keep the application area enough ventilated. Keep the tins closed after usage and away from sunlight. Please read carefully the safety data sheet before usage. Always test the product before use.

TECHNICAL INFORMATION :


PHYSICAL STATE		Liquid
COLOUR		Lime Color

CHARACTERISTICS OF PRODUCT	
PRODUCT ASPECT	Liquid
ODOUR	Lime

DUSH 

Toll Free No: 18008910133, E-MAIL: india@dushproducts.com

Website: dushproducts.com

Italy 

Via Roma, 2 Lancenigo di Villorba-31020, Treviso(TV) ITALY

DISCLAIMER:

Before using any Dush products, test on a small, inconspicuous area to ensure compatibility and understand the application process. Results may vary based on application methods, surface conditions, and climate factors such as temperature and humidity. While Dush aims to provide high-quality products, we cannot guarantee specific results due to these variables. By using Dush products, you acknowledge and accept that Dush shall not be held liable for any damage or unsatisfactory results arising from their use or misuse.